

PART OF THE NW.1/4, OF SECTION 8, T.6N., R.2W., S.L.B. & M.

427

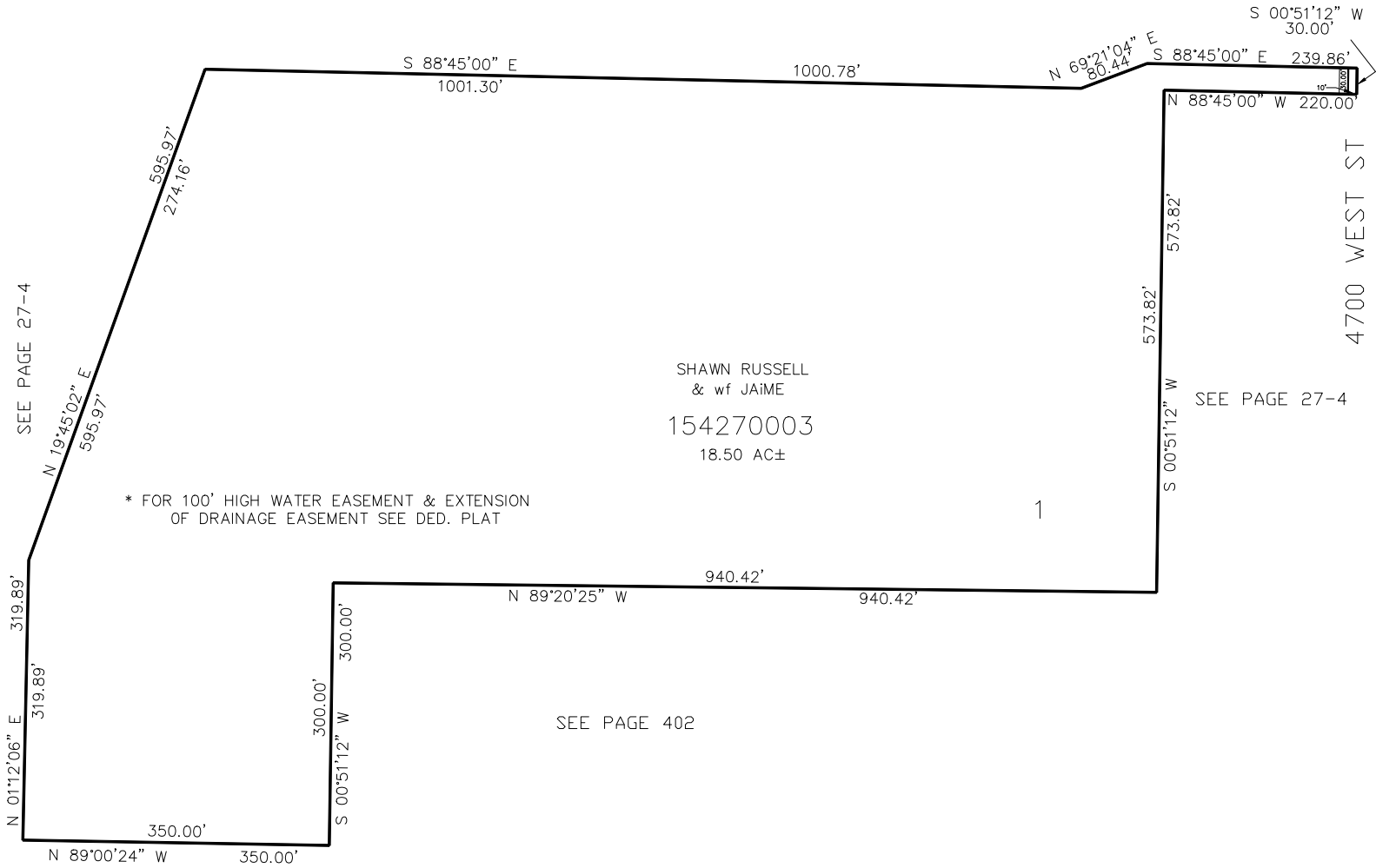
# RUSSELL ACRES

IN WEBER COUNTY

TAXING UNIT: 516

SCALE 1" = 100'

SEE PAGE 27-4



FOR COMPLETE ENG DATA SEE  
ORIGINAL DEDICATION PLAT IN  
BOOK 64, PAGE 35 OF RECORDS.

10' UTILITY & DRAINAGE EASEMENTS EACH  
SIDE OF PROPERTY LINES AS INDICATED  
BY DASHED LINES EXCEPT AS OTHERWISE  
SHOWN.